

Fig. 1 CROSSING PROPERTY BC LOCATION MAP

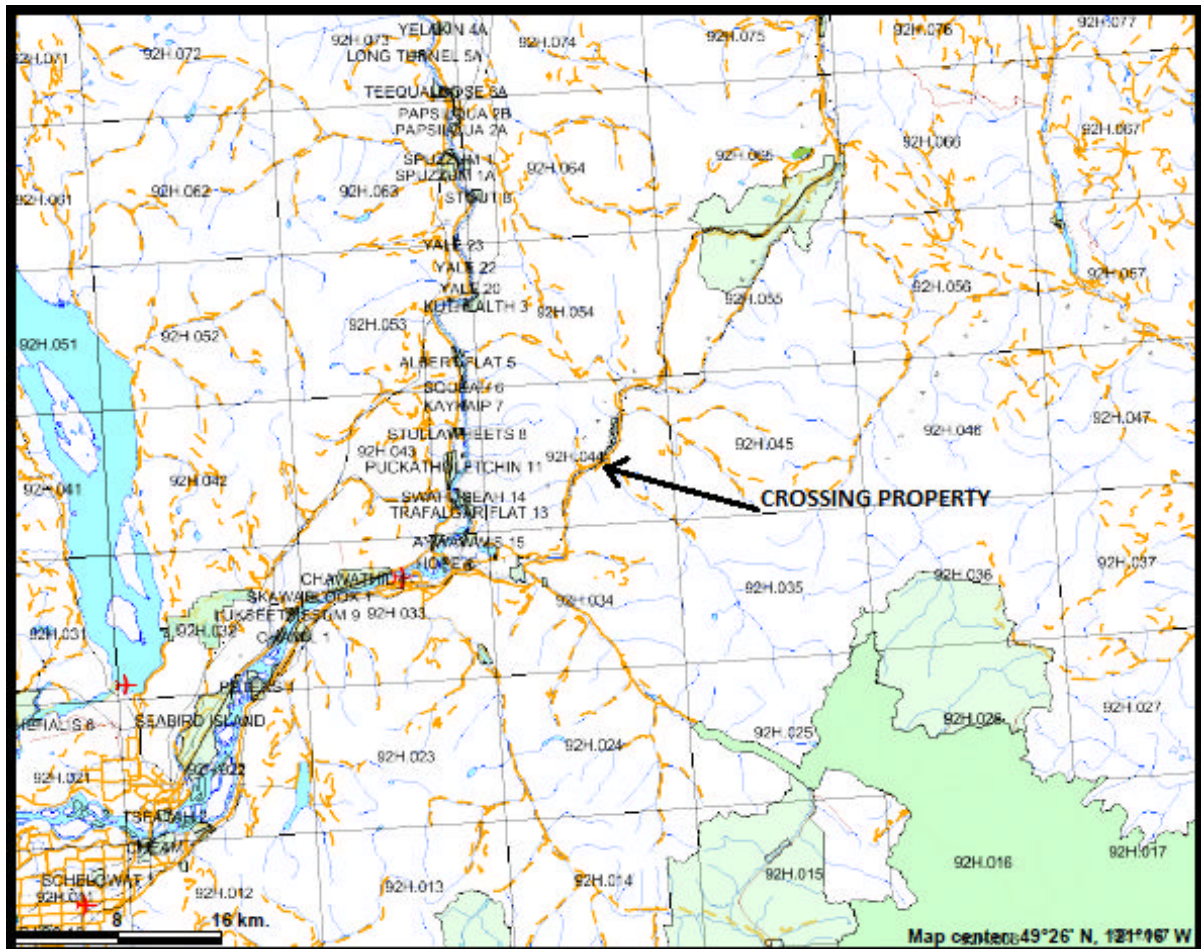


Fig. 2 CROSSING PROPERTY REGIONAL LOCATION MAP

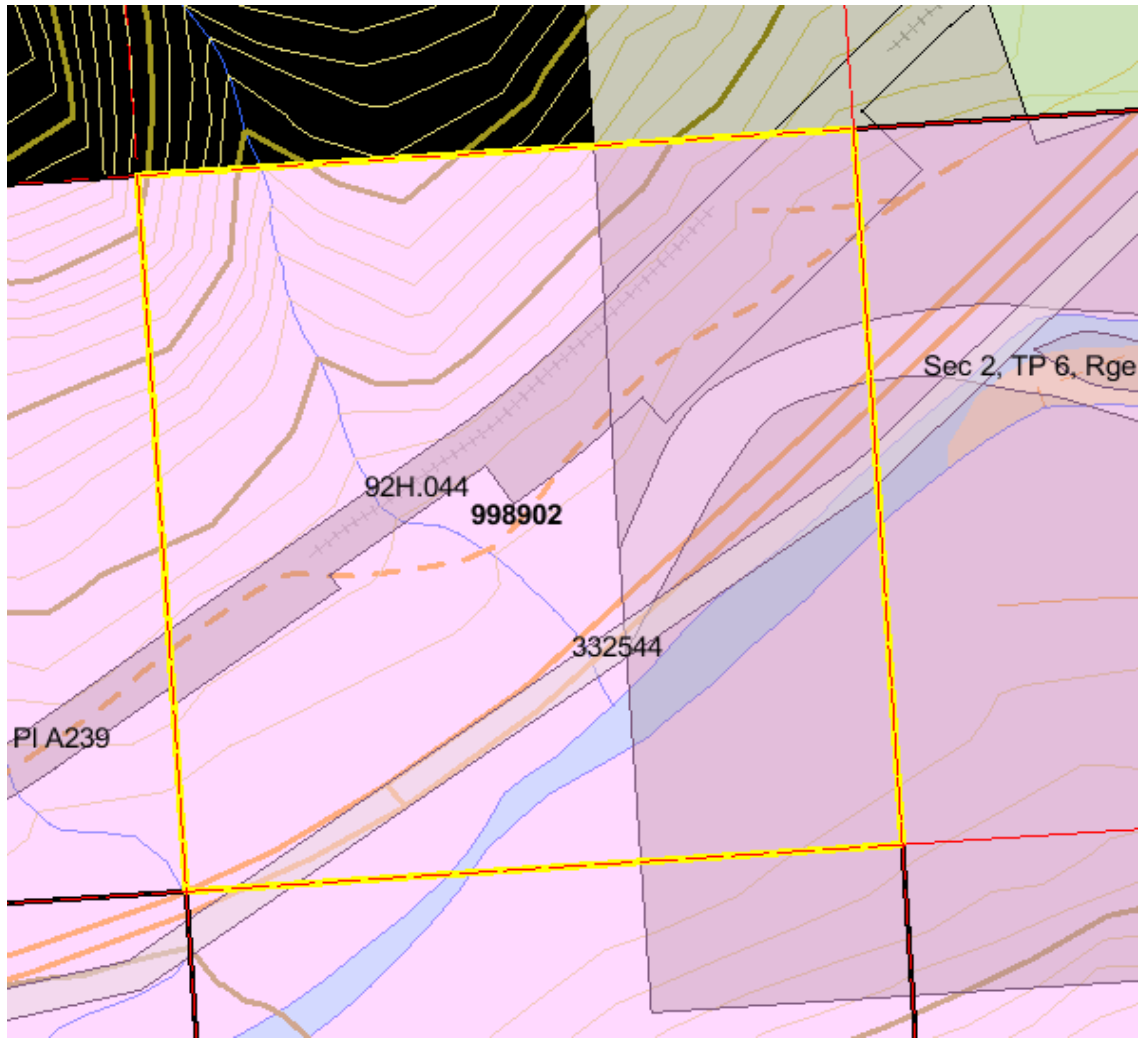
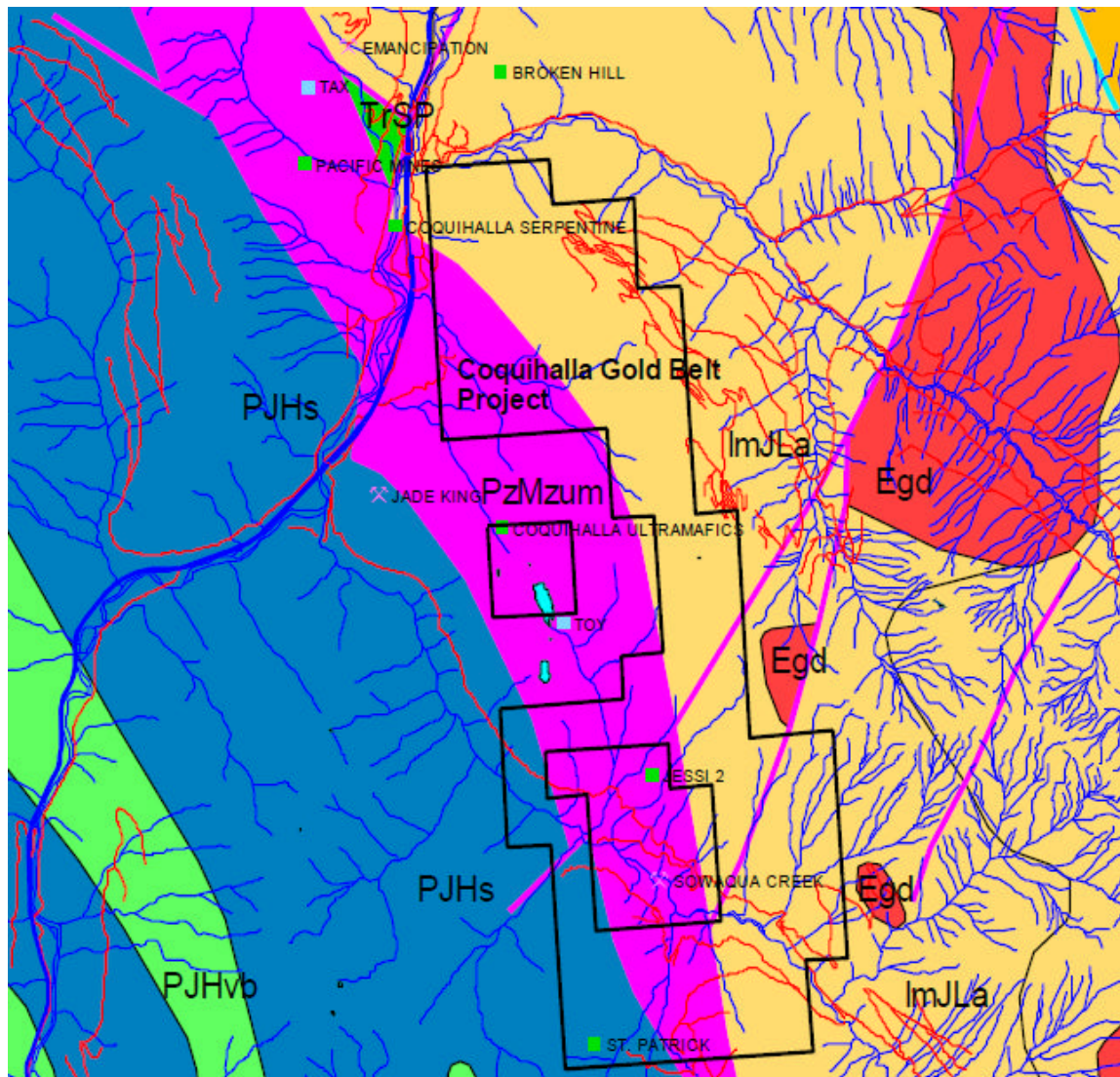


Fig. 3 CROSSING PROPERTY MAP



Fig. 4 RECONNAISSANCE PROSPECTING AT CROSSING PROPERTY



Egd – Eocene – granodioritic intrusive rocks
 ImJLa – Lower Jurassic to Middle Jurassic Ladner Group – mudstone, siltstone, shale fine clastic sedimentary rocks
 PJHs – Permian to Jurassic Hozameen Complex – undivided sedimentary rocks
 PJHvb - Permian to Jurassic Hozameen Complex – basaltic volcanic rocks
 PzMzum – Paleozoic to Mesozoic - ultramafic rocks
 TrSP – Triassic Spider Peak Formation – basaltic volcanic rocks

Fig.5 REGIONAL GEOLOGY MAP



Fig. 6 RIVER PHOTO NEAR CROSSING PROPERTY